

The Craven Hall Newsletter

CRAVEN HALL HISTORICAL SOCIETY, THE JOHN FITCH STEAMBOAT MUSEUM,
& THE CRAVEN VANSANT BURYING GROUND



VOLUME 20, ISSUE 1, MARCH 2022

IN THIS ISSUE:

- President's Letter
- The Importance of Steam
 - John Fitch's Hatchet
 - Henry Voight
- Tombstone Restoration Project
- Colonial Receipts
 - Herbed Biscuits
 - Sour Cream Pye
- Upcoming Events 2022
- Memberships & Donations



Erik Fleischer — President

Laura Martin — Vice President, Treasurer

Bernice Graeter-Reardon — Vice President, Secretary

Jennifer Burns — Vice President, Public Relations, Editor

Kent Sloan — Photographer

President's Letter

I think most of us would agree that we are glad 2021 is gone and hope that 2022 proves to have a better outcome.

With the pandemic upon us, we were not able to host our programs for Elementary and Middle Schools although both Klinger and Log College were able to conduct their experiments with model steamboat building/racing in-house. The competition between the schools unfortunately had to be cancelled.

We have been advised that the Technical Teachers at Log College and Klinger Middle schools have expanded the program for 2022 and we are interested to see the results of their expanded program. We hope to have the two schools back at Craven Hall later this year to observe the results of their experiments.

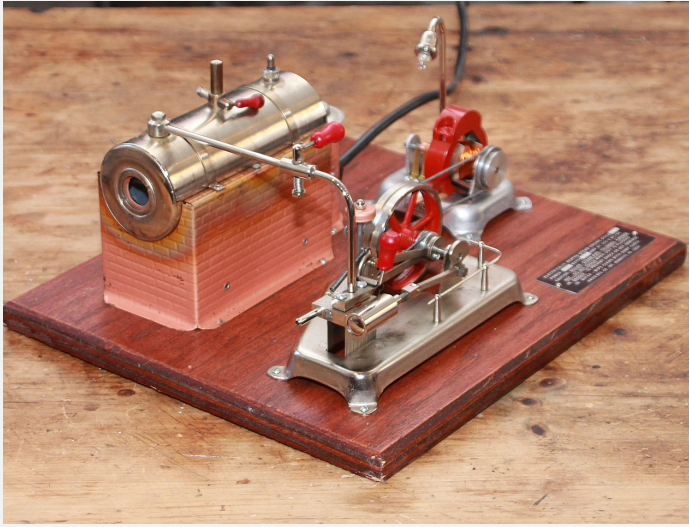
Our major project in 2022 is the restoration of some of the original tombstones from the 1769 Craven Vansant Burial Ground. We have engaged Jim Davis of "Tidy Tombstones" to aid us in that project. Jim is a Tombstone and Cemetery restoration expert and we are excited to see what he can do to restore some of our original tombstones from the burial ground. Restored gravestones will be displayed in the cellar of Craven Hall.

Our program for elementary students usually begins in early December and we are hopeful that this pandemic will be behind us by then so that we can resume our program on local history.

*-Erik Fleischer
President of the Craven Hall Historical Society*



The Importance of Steam



Steam is immensely important in today's society as almost 80% of electrical generation relies on steam. Steam powers the turbines that are connected to generators to produce most of the world's electricity.

When we interact with students on John Fitch and his steamboat, we use a small model power plant to demonstrate how steam is used to power small piston devices that in turn are connected to a generator that produces enough electricity to light a small light bulb as shown to the left.

In the real world, the pistons in the model are replaced by steam turbines.

JOHN FITCH'S HATCHET

The estate of Peter Brunner, early supporter and a former President of the Craven Hall Historical Society, Inc. has bequeathed an 18th century hatchet to the Society. Peter was an avid auction attendee and purchased the hatchet at a Bucks County auction.

The hatchet has Fitch's "mark" on the blade which we believe authenticates his ownership. We plan to prepare a display case to house the hatchet in the John Fitch Steamboat Museum.

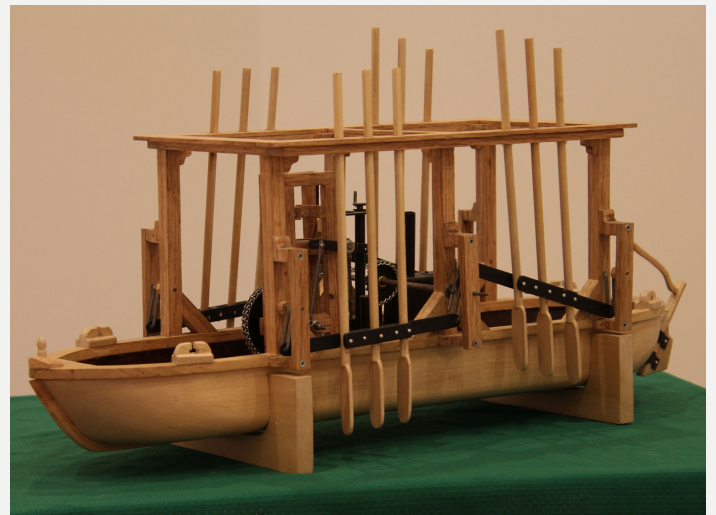


HENRY VOIGHT - STEAMBOAT ASSOCIATE OF JOHN FITCH

Henry Voight (1738-1814) was a clockmaker, mathematical instrument maker, machine and steam engine builder and Chief Coiner of the first United States Mint.

Fitch had been convinced by Benjamin Franklin that Daniel Bernoulli's 1753 idea of a jet propulsion boat could be made practical utilizing a steam driven water pump, however Voight induced Fitch to give up Franklin's idea and stick to his paddle driven design. Voight further convinced Fitch to first build a model steam engine – when completed, it was the first steam engine Fitch had ever seen.

While the steam engine had previously been invented in England, it was unavailable in the United States due to export restrictions. How much influence did Henry Voight have in assisting John Fitch with development of the first steamboat? The answer is unknown but he most likely played a significant role in the invention.



VOIGHT'S FAMOUS CLOCK

Henry Voight's most famous clock, the Ohio Clock, was commissioned by the United States Senate in 1815 and today stands across the hall from the main entrance of the Senate building.

Tombstone Restoration Project

1769 CRAVEN-VANSANT BURYING GROUND

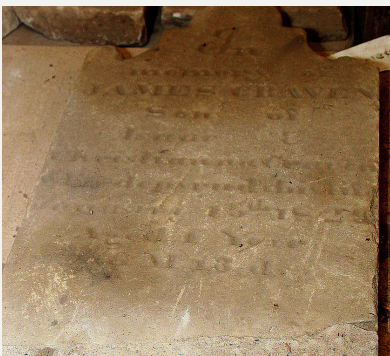
The Craven Hall Historical Society, Inc. owns a tract of land on Newtown Road a few hundred yards south of Craven Hall that includes the Craven-Vansant Burying Ground accessible from the driveway for the Fox Run Apartments.

The burial ground which is enclosed in a stone wall includes the final resting place for many of the early Dutch residents of the area. An Arnold Brothers postcard from 1912 shows the intact gravestones before the burial ground was vandalized.



Fortunately, concerned citizens, including students from William Tennent High School, gathered up many of the uprooted/broken tombstones and saved them. They were given to Craven Hall when the Society obtained the property in the late 1970's.

The tombstones are stored in the basement of Craven Hall awaiting restoration. We have retained the services of Jim Davis of "Tidy Tombstones" to begin the process of restoring as many of the tombstones as possible for ultimate display in the basement of Craven Hall. Some of the examples of the restoration needed are pictured (left).



Inscription – In memory of Mary Craven, wife of Giles Craven who departed this life October 6th, 1777 in the 50th year of her life.



Donations to help with this restoration project would be much appreciated. Your name will be recorded in a register that will be kept with the restored tombstones.

Colonial Receipts



SOUR CREAM PYE

Ingredients:

1 cup white sugar
3/4 tsp of cinnamon
1/4 tsp of nutmeg
Pinch of salt
1 cup of sour cream
3 Eggs slightly beaten
2 cups of raisins, chopped
1 unbaked pie shell

Directions:

1. Preheat your oven to 450 degrees.
2. Combine all ingredients and put in a pie shell.
3. Place pie in 450 degree oven for 15 minutes.
4. Reduce the oven temperature to 350 for an additional 30 minutes.

HERBED BISCUITS

These would have been prepared in a Dutch oven, but the instructions are based on using your oven at home!

Ingredients:

2 cups flour
2 1/2 tsp baking powder
3/4 tsp salt
1/3 lard (You can use Crisco)
3/4 cup of milk
1 tsp of a herb (dried rosemary or thyme is always a good choice!)

Directions:

1. Sift together in a larger bowl the flour, baking powder and salt.
2. Cut in lard/shortening. Add your herb of choice as well.
3. Add milk and stir with fork. Do not over mix!
4. Knead 20 turns and roll out on a floured board to 1/2 inch thickness. Do not over knead!
5. Cut into rounds using the top of a glass or a cutter.
6. Place on a baking sheet (you can grease or use parchment paper) in 350 degree oven
7. Check in 10 minutes, cook time will be around 12-15 minutes.

Upcoming Events



JOHN FITCH'S STEAMBOAT AT PHILADELPHIA

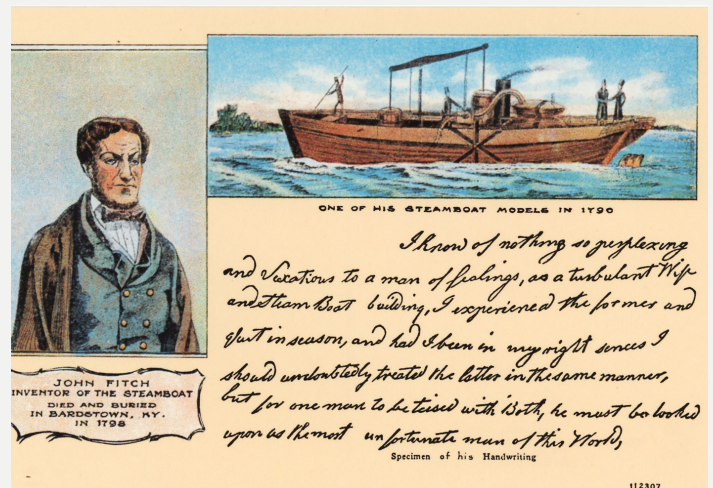
This spring, the Craven Hall Historical Society will begin offering new, free monthly house tours on select Thursdays through September at Craven Hall and the John Fitch Steamboat Museum.

The new events, which will include a special presentation on local and Colonial history, will begin on April 28 with a focus on Bucks County "Past & Present." The programs will begin at 7:00 p.m.

2022 EVENTS

Open House Tours
Every second Sunday of the month

- April 28: "Local History Past & Present"
- May 19: "Open Hearth Cooking"
- June (TBA) Special Presentation
- July (TBA) Special Presentation
- August 11: "John Fitch"
- September (TBA) Special Presentation
- October 15: Annual Crooked Billet 5K & Health Walk
- November 5: Volunteer Open House
- December 11: Holiday Open House



We Thank You For Your Continued Support

To stay up to date on Craven Hall and to learn more about Colonial America and local history, follow us on Facebook, Instagram, and Medium.com.



FOR MORE VISIT: www.craven-hall.org

Memberships & Donations

Name: _____ Street: _____
City/State/Zip: _____ Telephone: _____
Email Address: _____

APPLICATION FOR MEMBERSHIP

Membership:

Individual or Family: \$15 (includes decal and refrigerator magnet)

Volunteers:

- | | |
|--|--|
| <input type="checkbox"/> Restoration/Repairs | <input type="checkbox"/> Membership/Public Relations |
| <input type="checkbox"/> Fundraising | <input type="checkbox"/> Special Events |
| <input type="checkbox"/> Historic Research/Library | <input type="checkbox"/> Gravestone Restoration |
| <input type="checkbox"/> Centralizing Records | <input type="checkbox"/> Other: _____ |
| <input type="checkbox"/> Docent (Tour Guide) | |

If you are interested in volunteering, please check a box. We need you! Thank you.

Contribution to the Fitch Museum:

Donation Assistance for Additional Displays: ☐ Amount: _____ Thank you.

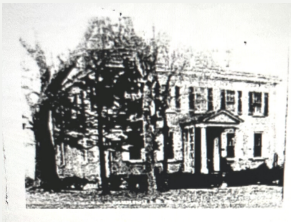
John Fitch Hall: ☐ Amount: _____ Thank you.

DVD of Craven Hall

- ☐ Amount by check: \$17.50 (to address below)
☐ Amount by pick-up: \$15.00 (Please call 215-675-4698)

Contributions to aid in the restoration and operation of Craven Hall are always welcome. Please make your check payable to **Craven Hall Historical Society, Inc. P.O. Box 2042, Warminster, PA 18974**

The Society is a non-profit corporation registered in Pennsylvania. Your contribution is tax deductible.



Craven Hall 1900's

Craven Hall Historical Society
P.O. Box 2042
Street and Newtown Roads
Warminster, PA 18974
(215) 675-4698

